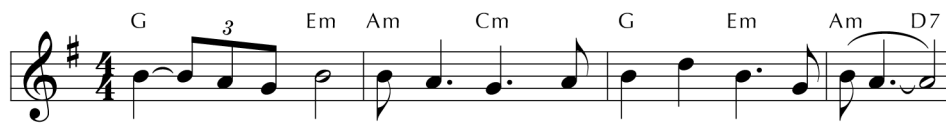


Born in the Night, Mary's Child 158



1 Born in the night, Mar-y's Child, a long way from your home;
 2 Clear shin-ing light, Mar-y's Child, your face lights up our way;
 3 Truth of our life, Mar-y's Child, you tell us God is good;
 4 Hope of the world, Mar-y's Child, you're com-ing soon to reign;



com - ing in need, Mar - y's Child, born in a bor - rowed room.
 Light of the world, Mar - y's Child, dawn on our dark - ened day.
 yes, it is true, Mar - y's Child, shown on your cross of wood.
 King of the earth, Mar - y's Child, walk in our streets a - gain.

Guitar chords do not correspond with keyboard harmony.

Carried by a blues-like tune, this text of clustered phrases centers on the core words "Mary's Child," initially linking images that suggest a Nativity hymn, but by the third stanza widening to the full arc of the Incarnation: birth, life, death, resurrection, ascension, return.

TEXT: Geoffrey Ainger, 1964, alt.
 MUSIC: Geoffrey Ainger, 1964; harm. Richard D. Wetzel, 1972
 Text and Music © 1964 Stainer & Bell, Ltd. (admin. Hope Publishing Company)

MARY'S CHILD
 7.6.7.6