


Shepherdstown Presbyterian Church: An Inclusive Spiritual Community. We welcome all who long for meaning, hope, and belonging. Our faith & practice are rooted in the way of Jesus and enriched by wisdom from all sources. We are committed to being and becoming people of radical compassion, working for justice and wholeness in ourselves and the world.



Sunday, December 28 • First Sunday of Christmastide

Isaiah 63:7–9 Psalm 148 Hebrews 2:10–18 Matthew 2:13–23
11:00 a.m. Service of Worship with Communion – Sanctuary and Zoom

Tuesday, December 30

Church Office Closed
6:00 p.m. SPC Game Night – Fellowship Hall

Wednesday, December 31

Church Office Closed

Thursday, January 1 • Happy New Year 2026!

Church Office Closed

Friday, January 2

7:00 p.m. Youth Group Star Camp – Fellowship Hall

Saturday, January 3

10:00 a.m. Deacon’s Meeting – Fellowship Hall
12:30 p.m. Listening Sessions Overview – Fellowship Hall

Sunday, January 4 • Epiphany Sunday

Jerimaiah 31:7-14 Psalm 147:12-20 Ephesians 1:3-14 John 1:1-9
11:00 a.m. Service of Worship with Communion – Sanctuary and Zoom
5:00 p.m. Community Meal – Zion Episcopal Church Social Center,
215 E. Washington St., Charles Town, WV 25414

For Anna

My daughter says
that the night is
God’s black cloak
spread across the sky
and that unseen stars
are halos hidden deep
within its folds.

My daughter says
that the earth is
a small brown box
held with care
in God’s great hands.

My daughter says all that.

Nancy Baillie Strong

I will recount the gracious
deeds of the LORD.
Isaiah 63:7

Praise the LORD!
Psalms 148:1

“I will put my trust in
him.” **Hebrews 2:13**

An angel of the Lord
appeared to Joseph in a
dream. **Matthew 2:13**

Preacher
Rev. Gusti Linnea Newquist

Assistant
Mica Martin

Special Music
Terry Tucker
Ardyth Gilbertson

Accompanist
Sam Jannotta

Tech Support
Mark Nutwell

To Our Guests
We are glad you are with
us. Please sign the guest
book by the front door and
fill in a visitor’s card from
the pew pocket. After the
service enjoy a cup of fair
trade coffee with friends in
the Fellowship Hall.

THE FONT OF IDENTITY

† † †

+Introit 155 (2x)
*Raise a song of gladness, people of the earth.
Christ has come, bringing peace, joy to every heart.
Alleluia, alleluia, joy to every heart!
Alleluia, alleluia, joy to every heart!*

Proclamation
In life and death we belong to God.
Through the grace of our Lord Jesus Christ,
the love of God, and the communion of the Holy Spirit,
we trust in the one triune God,
whom alone we worship and serve.

Call to Sabbath

***+Hymn 142**
“’Twas in the Moon of Wintertime”

Prayer for Sabbath (see insert)

+Response 144, v. 1, 4
“In the Bleak Midwinter”

Declaration of Grace and Gratitude

***+Response 110**
“Love Has Come”

***Passing the Peace**

Blessing the World
Denmark, Finland, Iceland, Norway, Sweden

Response 158, v. 1-2
*Born in the night, Mary’s Child, a long way from your home;
coming in need, Mary’s Child, born in a borrowed room.
Clear shining light, Mary’s Child, your face lights up our way;
Light of the world, Mary’s Child, dawn on our darkened day.*

First Pew

Response 158, v. 3-4

*Truth of our life, Mary’s Child, you tell us God is good;
yes, it is true, Mary’s Child, shown on your cross of wood.
Hope of the world, Mary’s Child, you’re coming soon to reign;
King of the earth, Mary’s Child, walk in our streets again.*

Welcome and Parish Life

THE WORD OF HOPE

† † †

Reading

Interlude

Lesson
Matthew 2:13-15

Communal Proclamation
“Protecting Sabbath With Us”

***Hymn 138**
“Who Would Think That What Was Needed”

THE BREAD OF LIFE

† † †

Prayer for Others

Offering Our Gifts

Offertory
“Coventry Carol”

† † †

***Credo**
With believers in every time and place
we rejoice that nothing in life or in death
can separate us from the love of God
in Christ Jesus, our Lord.

***Sending 136, refrain (2x)**
*Go, tell it on the mountain, over the hills and everywhere;
go, tell it on the mountain that Jesus Christ is born!*

***Postlude**

Power is no blessing in it-
self, except when it is used
to protect the innocent.
Jonathan Swift

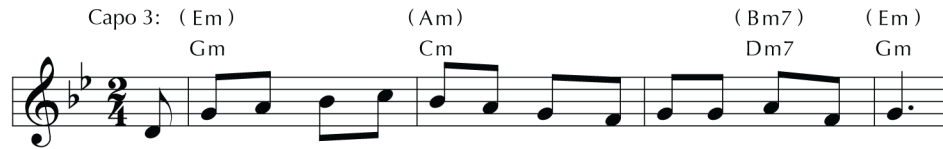
*Please rise in body and spirit.

Lesson Translation
New Revised
Standard Version

Sermons & Information
shepherdstownpresbyterian.org

+Hymns
reprinted with permission under
OneLicense.com
#A-007343. All rights reserved.

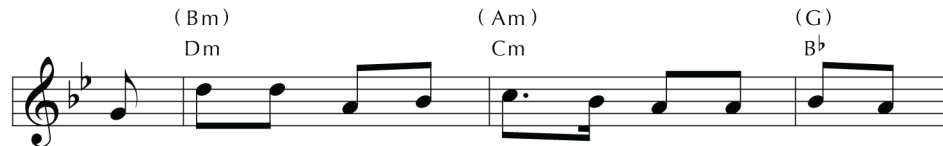
'Twas in the Moon of Wintertime 142



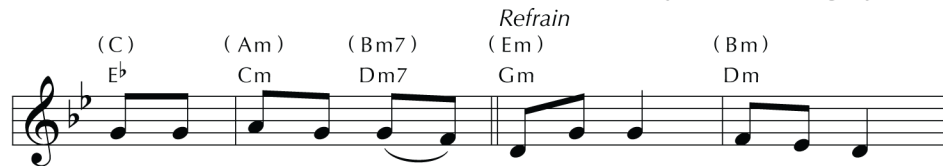
1 'Twas in the moon of win-ter-time, when all the birds had fled,
2 With-in a lodge of bro-ken bark the ten-der babe was found.
3 The ear-liest moon of win-ter-time is not so round and fair
4 O chil-dren of the for-est free, the an-gel song is true:



Great Spir-it, Lord of all the earth sent an-gel choirs in-stead.
A rag-ged robe of rab-bit skin en-wrapped his beau-ty round.
as was the ring of glo-ry on the help-less in-fant there.
the ho-ly child of earth and heaven is born to-day for you.



Be-fore their light the stars grew dim and wan-dering
But as the hunt-ers brave drew nigh the an-gel
The chiefs from far be-fore him knelt with gifts of
Come kneel be-fore the ra-diant boy who brings you



Refrain
hunt-ers heard the hymn:
song rang loud and high: Je-sus, your king, is born;
fox and bea-ver pelt.
beau-ty, peace, and joy.



Je-sus is born. In ex-cel-sis glo-ri-a.

Guitar chords do not correspond with keyboard harmony.

This English text preserves the earliest known Canadian hymn, originally written in the Huron language by a missionary, later translated into French, and eventually paraphrased in English. It is set to a French Noël tune old enough to have been used for the original version.

In the Bleak Midwinter

144



1 In the bleak mid-win - ter, frost - y wind made moan;
 2 Our God, heaven can - not hold him, nor earth sus - tain;
 3 An - gels and arch - an - gels may have gath - ered there;
 4 What can I give him, poor as I am?

earth stood hard as i - ron, wa - ter like a stone;
 heaven and earth shall flee a - way when he comes to reign:
 cher - u - bim and ser - a - phim thronged the air;
 If I were a shep - herd, I would bring a lamb;

snow had fall - en, snow on snow, snow on snow,
 in the bleak mid - win - ter a sta - ble place suf - ficed
 but his moth - er on - ly, in her maid - en bliss,
 if I were a wise man, I would do my part;

in the bleak mid - win - ter, long a - go.
 the Lord God in - car - nate, Je - sus Christ.
 I wor - shipped the be - lov - ed with a kiss.
 yet what I can I give him: give my heart.

Though this text describes winter weather in England rather than in Palestine, the poet is using familiar surroundings as a means of making the Nativity more immediate and personal. The tune name honors a Gloucestershire village near the composer's birthplace in Cheltenham.

Love Has Come

110

Capo 3: (D) F (Bm7) Dm7 (Em7) Gm7 (A) C

1 Love has come: a light in the dark - ness!
 2 Love is born! Come, share in the won - der.
 3 Love has come and nev - er will leave us!

(D) (Bm7) (Em) (A7) (D)
 F Dm7 Gm C7 F

Love shines forth in the Beth - le - hem skies. See, all
 Love is God now a - sleep in the hay. See the
 Love is life ev - er - last - ing and free. Love is

(A) (D) (Bm) (D) (A) (G) (D)
 C F Dm F C B^b F

heav - en has come to pro - claim it; hear how their song of
 glow in the eyes of his moth - er; what is the name her
 Je - sus with - in and a - mong us. Love is the peace our

(Em7) (F#7) (G) (A) (Bm) (A7)
 Gm7 A7 B^b C Dm C7

joy a - ris - es: Love! Love! Born un - to you, a
 heart is say - ing? Love! Love! Love is the name she
 hearts are seek - ing. Love! Love! Love is the gift of


(D) (A) (G) (A) (D) (A) (A7) (Dsus) (D)
 F C B^b C F C C7 Fsus F

Sav - ior! Love! Love! Glo - ry to God on high.
 whis - pers. Love! Love! Je - sus, Em - man - u - el.
 Christ-mas. Love! Love! Praise to you, God on high!

Here is a chance to sing a familiar French carol tune with new words, the most important clearly being "Love." The senses "seen and heard" (as in Acts 4:20 and elsewhere) organize the first two stanzas, while the third holds the summary statement: "Love is the gift of Christmas."

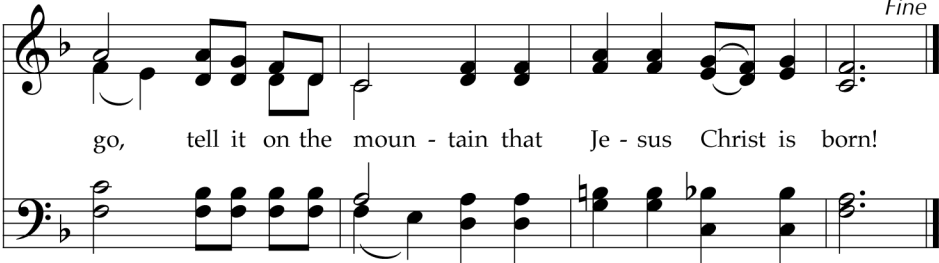
JESUS CHRIST: BIRTH

136 Go, Tell It on the Mountain

Refrain 

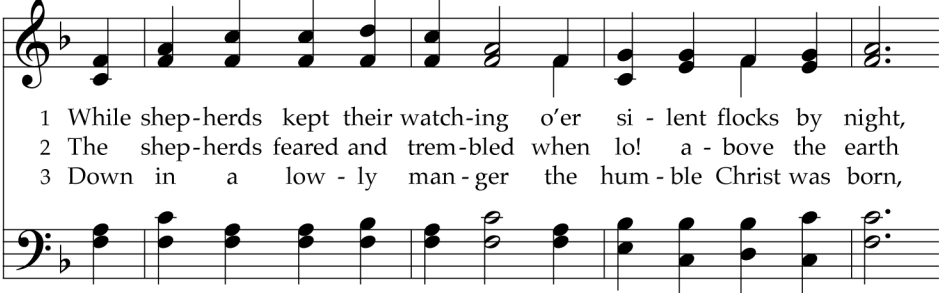


Go, tell it on the moun-tain, o-ver the hills and ev - ery - where;

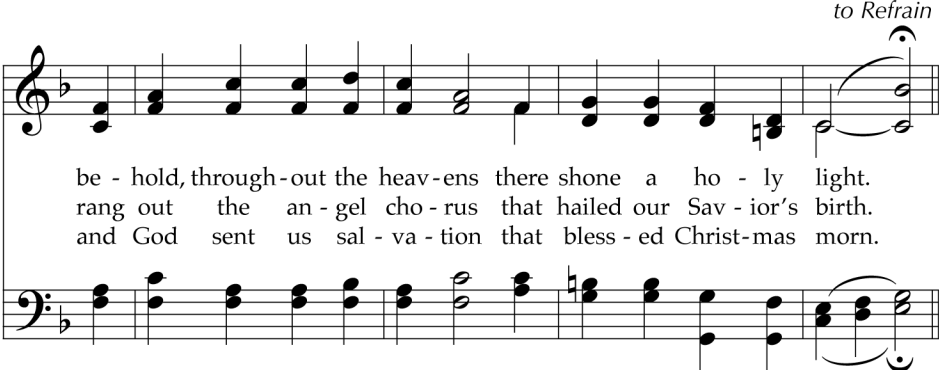


go, tell it on the moun - tain that Je - sus Christ is born!

Fine



1 While shep-herds kept their watch-ing o'er si - lent flocks by night,
2 The shep-herds feared and trem-bled when lo! a - bove the earth
3 Down in a low - ly man - ger the hum - ble Christ was born,



to Refrain

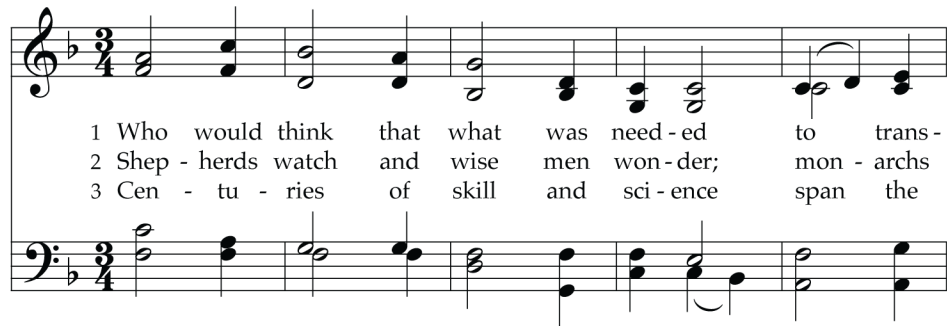
be - hold, through-out the heav-ens there shone a ho - ly light.
rang out the an - gel cho - rus that hailed our Sav - ior's birth.
and God sent us sal - va - tion that bless - ed Christ-mas morn.

Like other material from oral traditions, 19th-century African American spirituals flourished without being written down. Their refrains were their most stable parts, and narrative stanzas were often improvised to fit. These Nativity stanzas attempt to recall that tradition.

TEXT: African American spiritual; stanzas, John W. Work II, 1940
MUSIC: African American spiritual; arr. John W. Work III, 1940; harm. Melva Wilson Costen, 1987
Music Harm. © 1989 Melva Wilson Costen

GO TELL IT
7.6.7.6 with refrain

138 Who Would Think That What Was Needed



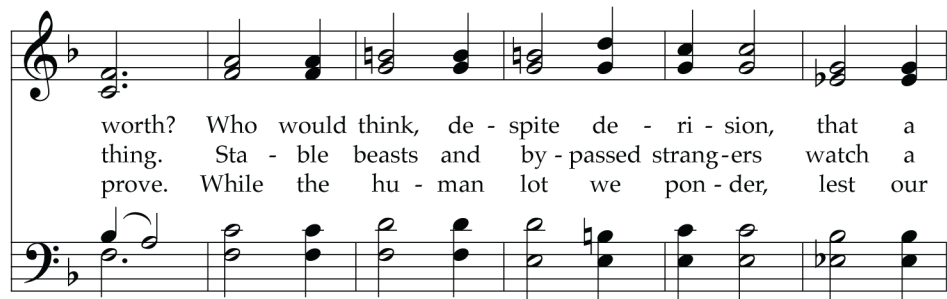
1 Who would think that what was need - ed to trans -
 2 Shep - herds watch and wise men won - der; mon - archs
 3 Cen - tu - ries of skill and sci - ence span the



form and save the earth might not be a
 scorn and an - gels sing; such a place as
 past from which we move, yet ex - pe - rience



plan or ar - my, proud in pur - pose, proved in
 none would reck - on hosts a ho - ly help - less
 ques - tions wheth - er, with such prog - ress, we im -



worth? Who would think, de - spite de - ri - sion, that a
 thing. Sta - ble beasts and by - passed strang - ers watch a
 prove. While the hu - man lot we pon - der, lest our

Hindsight is nearly always clearer than foresight, and with gentle good humor this Christmas hymn points out how great was the gap between human expectation and God's actual way of providing a means of salvation for us. God's ways continually exceed our claims to comprehend them.

JESUS CHRIST: BIRTH

child should lead the way?
ba - by laid in hay; God sur - pris - es earth with
hopes and hu - mor fray,

This musical system consists of a treble and bass staff. The treble staff begins with a treble clef, a key signature of one flat (B-flat), and a common time signature. It contains a series of chords and single notes, ending with a whole note chord. The bass staff begins with a bass clef, a key signature of one flat, and a common time signature. It contains a series of chords and single notes, ending with a whole note chord. The lyrics are written below the staves, aligned with the notes.

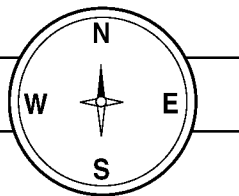
heav - en, com - ing here on Christ - mas Day.

This musical system consists of a treble and bass staff. The treble staff begins with a treble clef, a key signature of one flat, and a common time signature. It contains a series of notes and chords, ending with a double bar line. The bass staff begins with a bass clef, a key signature of one flat, and a common time signature. It contains a series of notes and chords, ending with a double bar line. The lyrics are written below the staves, aligned with the notes.



But Joseph heard bad things
about where they were going and
decided to settle someplace else.
Where was it?

Follow the directions to find the answer.



NORTHSOUTHEASTWEST

1. Delete all the "O's" and "S's."

2. Keep the first "T" and "H" you come across.
Delete the others.

3. Change the "R" to an "A" and the "U" to a "Z."

4. Change the "W" to an "R." Delete the last letter.

5. Move the "R" between the "H" and the "Z."

6. Move the last "A" next to the first "A."

7. Put the "Z" between the two "A's."

8. Move the "R" and the "E" before the "T."



Children's Worship Bulletin™

Ages 7+

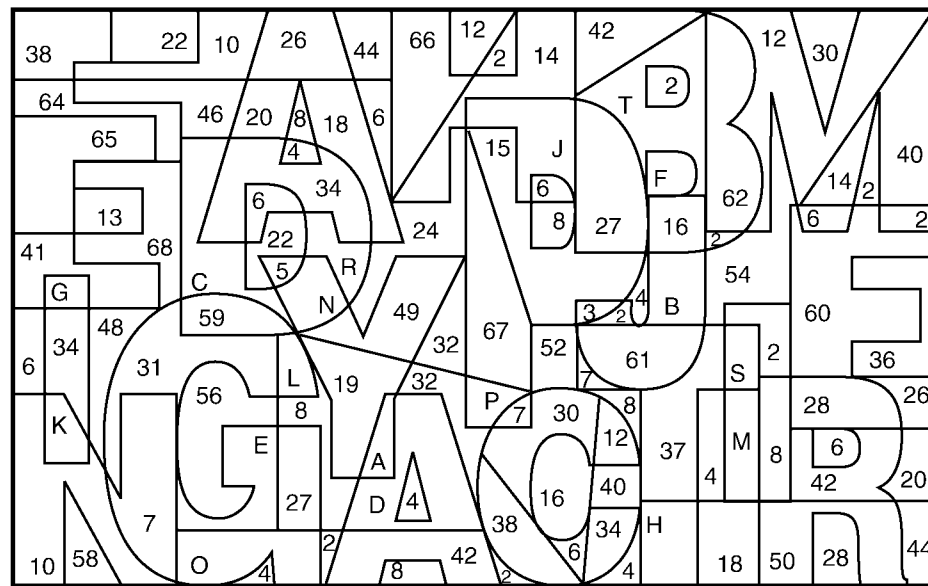
December 28, 2025 • Matthew 2:13-23

The Escape to Egypt and Return to Nazareth

An angel of the Lord appeared to
Joseph in a dream. The angel told Joseph to take
baby Jesus somewhere. Where was it?

Follow the directions to shade in
the correct shapes and reveal the answer.

1. Shade in any shape with the letters contained
in the name JOSEPH.
2. Do the same with the letters in ANGEL.
3. Lastly, shade in all the odd numbered shapes.



What happened next?

Use this code to fill in the blanks.

◻	G	R	T	C	L
▽	Q	F	M	Z	O
△	A	J	W	I	U
◻	H	Y	B	N	D
□	S	E	K	V	P
	○	♡	☆	◻	◇

○□ ◇▽ ♡△ ◇▽ ○□ ♥□ ◇□ ○○ ○○ ◇▽ ☆△

◇△ ◇□' ☆△ ◇▽ ◇▽ ☆□ ☆△ ○○ ♥□

△△ ○○ △△ ◇△ ◇△ ○△ △△ ◇△ ○○ △△ ○□

☆▽ ◇▽ ☆△ ○○ ♥□ ♥△ ◇△ ◇△ ♥△ △△ △△ ○△

☆△ ○○ ♥□ △△ △△ ○△ ○○ ☆△ ○△ △△ ◇△

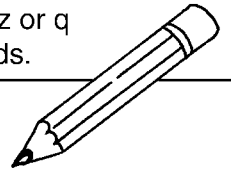
◇△ ♥□ ♥▽ ☆△ ♥▽ ◇▽ ♥△

♥□ ○△ ♥△ ◇△ ☆△



What happened next?

Cross out all the words that have b, z or q in them. Read the remaining words.



After King Herod died, baby an zoo

angel of bubble the bundle Lord appeared zero

in a blizzard dream to zebra Joseph in big bite

button Egypt and said, "Get Zeus up, ball take

the queen child and His brother mother bustle

quiet to the quite land zone quit of Israel."

